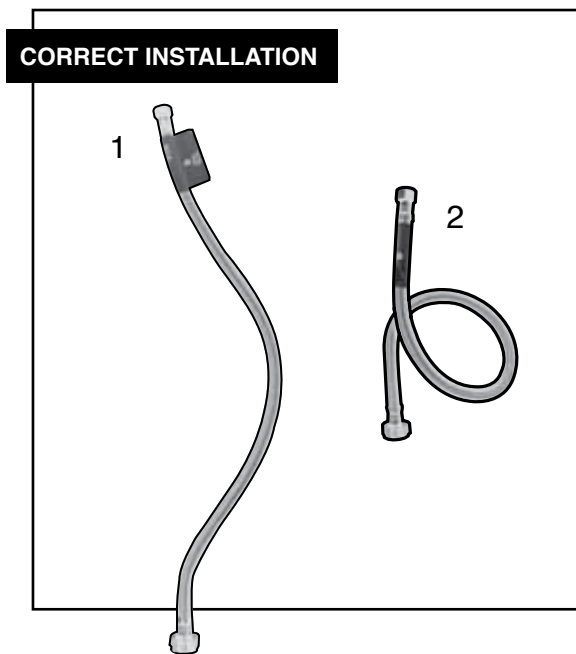


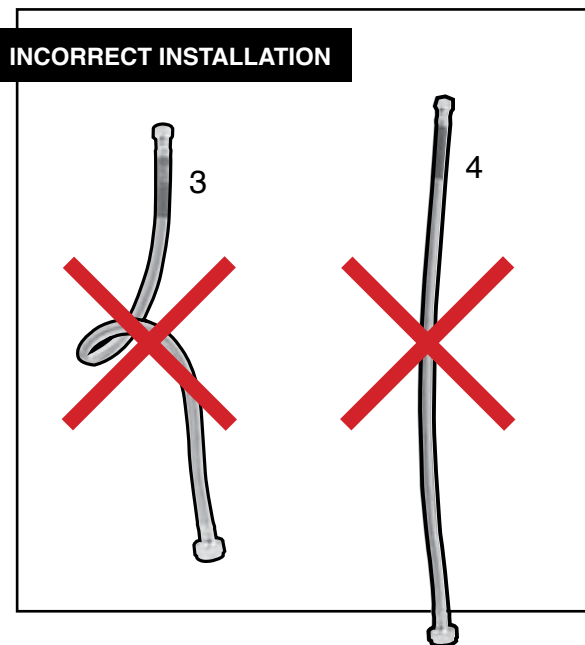
FLEX CONNECTOR INSTALLATION AND CARE

All of our Flexible Connectors (FLEX's), except where otherwise indicated, feature brass nuts, inserts and crimps.

- FLEX's must be installed in compliance with all applicable Building Codes & Bylaws. FLEX's are approved for exposed locations only - behind the wall or tub deck installation is prohibited.
- FLEX's are intended to attach the supply lines to the fixture supply fittings in potable water applications only. Toilet Connectors can be used in potable water or grey water applications only.
- FLEX's should not be stretched or kinked in any way. See illustrations below.
- Do not over tighten nuts. For Plastic nut **hand tight only**. For Brass nut hand tight plus 1/4 to 1/2 turn.
- Do not expose to household cleaners or other corrosive materials.
- **FLEX CONNECTORS SHOULD BE REPLACED WITHIN 5 YEARS FROM THE DATE OF PURCHASE.**



There should always be a smooth "bow" (illustration 1) or a "lazy loop" (illustration 2) as demonstrated above.



In illustration 3, the FLEX is kinked causing poor water flow.

In illustration 4, the FLEX is too short and is being stretched. This may cause failure of the hose.

Note: Misuse or improper installation will void all warranties and liabilities.

Note: Flexible Connectors are warranted for 1 year, from date of purchase, against workmanship and/or material defects only. OS&B® is not liable for damages due to improper use and installation



Oakville Stamping and Bending Ltd.

2200 Speers Road, Unit C. Oakville, ON. Canada. L6L 2X8.

T. 905.827.0320 or toll free 1.877.314.6040 F. 905.827.6375 or toll free 1.877.827.6040.

www.osb.ca

FLEXINSTALL0315